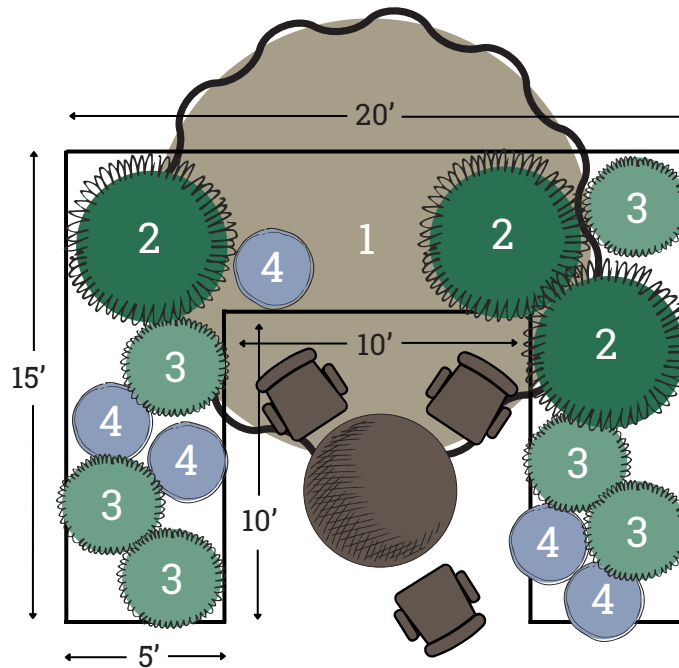


# Plant by Numbers



## Cottage Garden: Tea Nook for Sun

Plant selections create a whimsical garden with bountiful blooms. Spacing shown is for fully grown plants. Click on plant names for more info on the species.



### Small Tree

Pick 1 species and buy 1 plant.



[Redbud](#)



[Mexican Buckeye](#)



### Large Perennial

Pick 1 species and buy 3 plants.



[Rosemary](#)

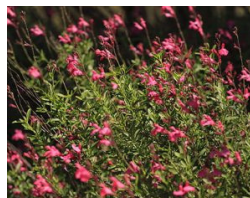


[Earth-Kind® Rose](#)



### Small Perennial

Pick 1 species and buy 6 plants.



[Autumn Sage](#)



[Mexican Oregano](#)

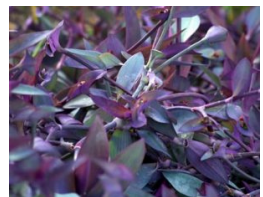


### Low Growing

Pick 1 species and buy 5 plants.



[Oregano](#)



[Purple Heart](#)

## Want \$100 for these plants?

This design is eligible for one WaterSaver Landscape Coupon if you remove 200 square feet of grass. Apply today at [GardenStyleSA.com/coupons](https://www.gardensstyle.com/coupons) to get 15 plants for free.

# Quick Tips on Maintenance

Mulch 2 inches deep using 16 bags of 2-cubic-foot wood mulch.



## Red Bud

- Edible flowers.
- Prune dead/diseased wood only.
- No extra watering required.



## Autumn Sage

- Cut back old branches by 1/3 in spring or as needed.
- Appreciates occasional water.



## Mexican Buckeye

- Pruning is optional.
- Prune dead/diseased wood only.
- No extra watering required.



## Mexican Oregano

- Edible leaves.
- Prune to shape if desired.
- Appreciates occasional water.



## Rosemary

- Edible leaves.
- Prune to shape if desired.
- Appreciates occasional water.



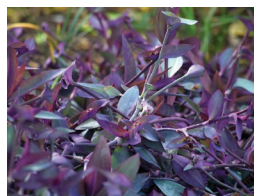
## Oregano

- Edible leaves.
- Appreciates occasional water.



## Earth-Kind® Rose

- Edible petals.
- Follow rose pruning practices.
- Appreciates occasional water.



## Purple Heart

- Spreads easily.
- Browns back in winter.
- Appreciates occasional water.

### Watering Countdown To Establish New Trees

- 3 times per week for 1st month.
- 2 times per week for 2nd month.
- 1 time per week for 3rd month.
- No extra watering required.

### Watering Countdown To Establish New Plants

- 3 times per week for 3 weeks.
- 2 times per week for 2 weeks.
- 1 time per week for 1 week.
- No extra watering required.

Scan for gardening basics and how-to videos on planting, weeding and more!

