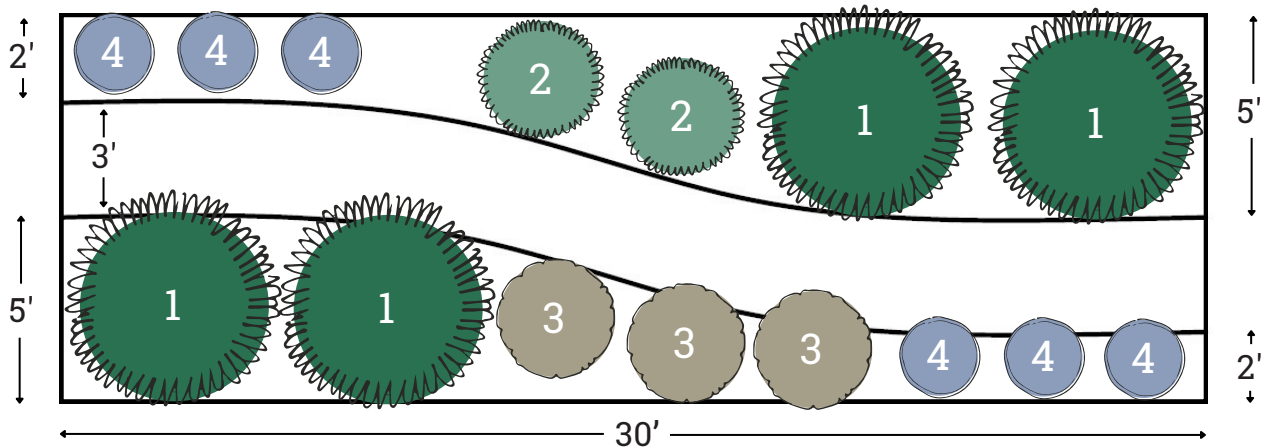


Plant by Numbers



Cottage Garden: Side Yard for Shade

Plant selections create a whimsical garden with bountiful blooms. Spacing shown is for fully grown plants. Click on plant names for more info on the species.



1 Large Perennial

Pick 1 species and buy 4 plants.



[Plumbago](#)



2 Small Perennial

Pick 1 species and buy 2 plants.

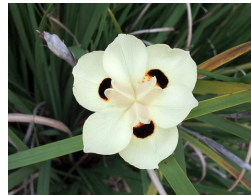


[Scarlet Sage](#)



3 Small Perennial

Pick 1 species and buy 3 plants.



[Bicolor Iris](#)



4 Low Growing

Pick 1 species and buy 6 plants.



[Cedar Sage](#)



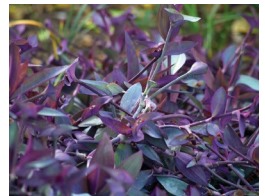
[Turk's Cap](#)



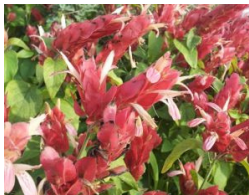
[Heartleaf Skullcap](#)



[Inland Sea Oats](#)



[Purple Heart](#)



[Shrimp Plant](#)

Want \$100 for these plants?

This design is eligible for one WaterSaver Landscape Coupon if you remove 200 square feet of grass. Apply today at [GardenStyleSA.com/coupons](https://www.gardensstyle.com/coupons) to get 15 plants for free.

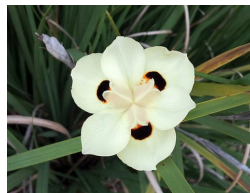
Quick Tips on Maintenance

Mulch 2 inches deep using 16 bags of 2-cubic-foot wood mulch.



Plumbago

- Prune to shape if desired.
- Appreciates occasional water.



Bicolor Iris

- Cut back in late winter if desired.
- No extra watering required.



Turk's Cap

- Edible flowers and fruits.
- Drops leaves in winter.
- No extra watering required.



Inland Sea Oats

- Cut back in late winter if desired.
- No extra watering required.



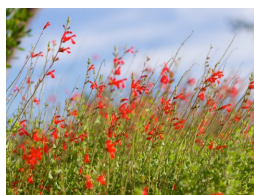
Shrimp Plant

- Spreads easily.
- Cut back if desired in late winter.
- No extra watering required.



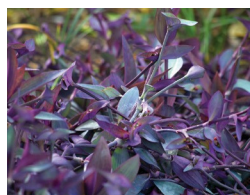
Cedar Sage

- May brown in drought/frost.
- Delicate — no shaping needed.
- No extra watering required.



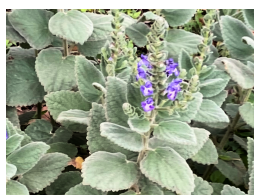
Scarlet Sage

- Cut back as needed in early spring.
- Appreciates occasional water.



Purple Heart

- Spreads easily.
- Browns back in winter.
- Appreciates occasional water.



Heartleaf Skullcap

- Cut back as needed in early spring.
- No extra watering required.

Watering Countdown To Establish New Plants

- 3 times per week for 3 weeks.
- 2 times per week for 2 weeks.
- 1 time per week for 1 week.
- No extra watering required.

Scan for gardening basics and how-to videos on planting, weeding and more!

