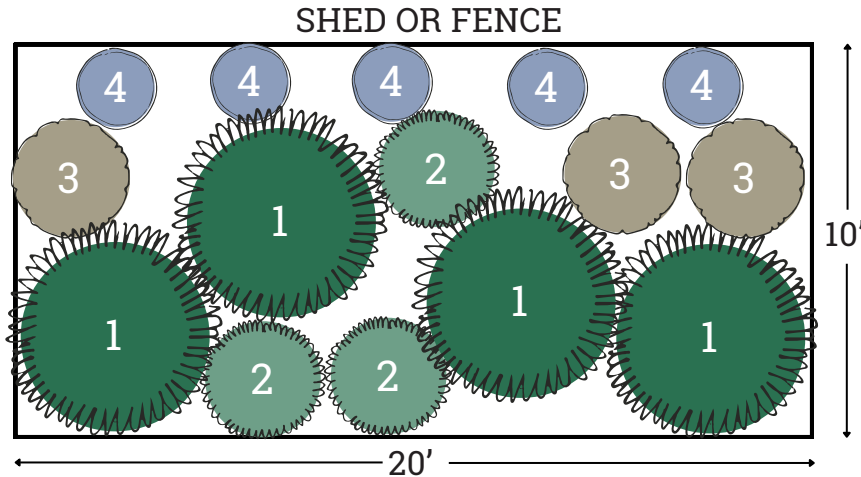


Plant by Numbers



Cottage Garden: Border for Sun

Create a whimsical garden with bountiful blooms against a shed or fence. Spacing shown is for fully grown plants. Click on plant names for more info on the species.



Large Perennial

Pick 1 species and buy 4 plants.



[Rosemary](#)



Small Perennial

Pick 1 species and buy 3 plants.



[Mexican Oregano](#)



Small Perennial

Pick 1 species and buy 3 plants.



[Mexican Skullcap](#)



Vining Perennial

Buy 5 plants of this species.



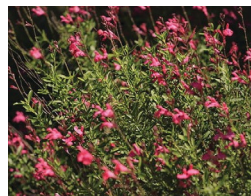
[Cecile Brunner Rose](#)



[Earth-Kind® Rose](#)



[Mealy Blue Sage](#)



[Autumn Sage](#)



[Jerusalem Sage](#)

Want \$100 for these plants?

This design is eligible for one WaterSaver Landscape Coupon if you remove 200 square feet of grass. Apply today at GardenStyleSA.com/coupons to get 15 plants for free.

Quick Tips on Maintenance

Mulch 2 inches deep using 16 bags of 2-cubic-foot wood mulch.



Rosemary

- Edible leaves.
- Prune to shape if desired.
- Appreciates occasional water.



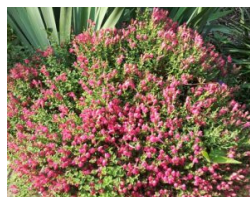
Mealy Blue Sage

- Prune to shape if desired.
- No extra watering required.



Earth-Kind® Rose

- Edible petals.
- Follow rose pruning practices.
- Appreciates occasional water.



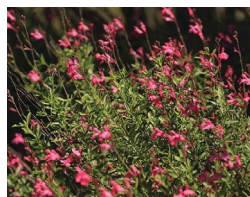
Mexican Skullcap

- Cut back old branches in spring or as needed.
- Appreciates occasional water.



Jerusalem Sage

- Prune to shape if desired.
- Appreciates occasional water.



Autumn Sage

- Cut back old branches by 1/3 in spring or as needed.
- Appreciates occasional water.



Mexican Oregano

- Edible leaves.
- Cut back as needed in early spring.
- Appreciates occasional water.



Cecile Brunner Rose

- Tie to trellis to direct growth.
- Follow rose pruning practices.
- Appreciates occasional water.

Watering Countdown To Establish New Plants

- 3 times per week for 3 weeks.
- 2 times per week for 2 weeks.
- 1 time per week for 1 week.
- No extra watering required.

Scan for gardening basics and how-to videos on planting, weeding and more!

