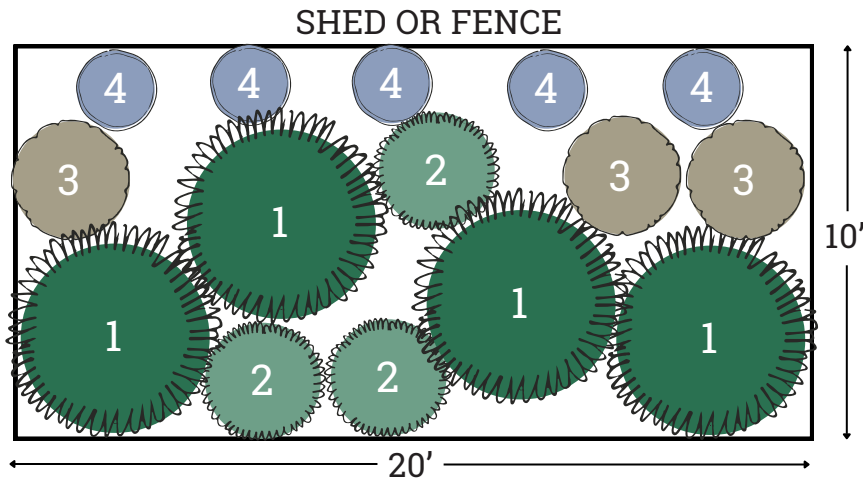


Plant by Numbers



Cottage Garden: Border for Shade

Create a whimsical garden with bountiful blooms against a shed or fence. Spacing shown is for fully grown plants. Click on plant names for more info on the species.



1 Large Perennial

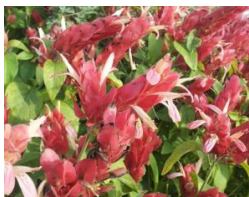
Pick 1 species and buy 4 plants.



[Plumbago](#)



[Turk's Cap](#)



[Shrimp Plant](#)

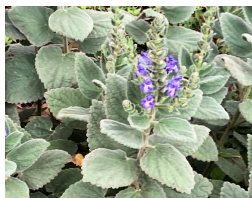


2 Small Perennial

Pick 1 species and buy 3 plants.



[Scarlet Sage](#)

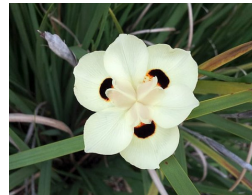


[Heartleaf Skullcap](#)



3 Small Perennial

Pick 1 species and buy 3 plants.



[Bicolor Iris](#)



[Inland Sea Oats](#)



4 Vining Perennial

Buy 5 plants of this species.



[Cecile Brunner Rose](#)

Want \$100 for these plants?

This design is eligible for one WaterSaver Landscape Coupon if you remove 200 square feet of grass. Apply today at [GardenStyleSA.com/coupons](https://www.gardensstyle.com/coupons) to get 15 plants for free.

Quick Tips on Maintenance

Mulch 2 inches deep using 16 bags of 2-cubic-foot wood mulch.



Plumbago

- Prune to shape if desired.
- Appreciates occasional water.



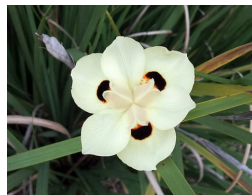
Heartleaf Skullcap

- Cut back as needed in early spring.
- No extra watering required.



Turk's Cap

- Edible flowers and fruits.
- Drops leaves in winter.
- No extra watering required.



Bicolor Iris

- Cut back in late winter if desired.
- No extra watering required.



Shrimp Plant

- Spreads easily.
- Cut back if desired in late winter.
- No extra watering required.



Inland Sea Oats

- Cut back in late winter if desired.
- No extra watering required.



Scarlet Sage

- Cut back as needed in early spring.
- Appreciates occasional water.



Cecile Brunner Rose

- Tie to trellis to direct growth.
- Follow rose pruning practices.
- Appreciates occasional water.

Watering Countdown To Establish New Plants

- 3 times per week for 3 weeks.
- 2 times per week for 2 weeks.
- 1 time per week for 1 week.
- No extra watering required.

Scan for gardening basics and how-to videos on planting, weeding and more!

