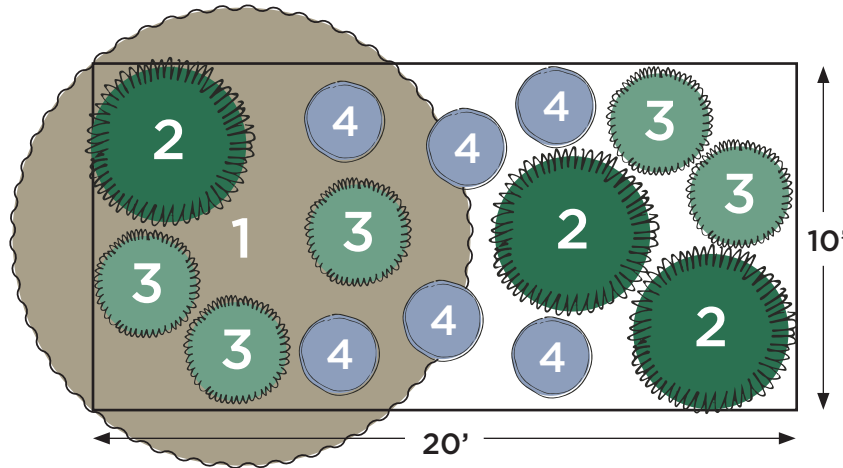


Plant by Numbers



Pollinator Garden for Sun

Plant selections provide habitat for different species of pollinators. Spacing shown is for fully grown plants. Click on plant names for more info on the species.



Small Tree

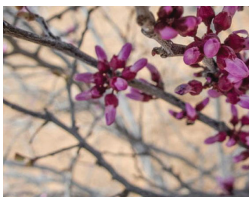
Pick 1 species and buy 1 plant.



[Mountain Laurel](#)



[Mexican Buckeye](#)



[Redbud](#)



Large Perennial

Pick 1 species and buy 3 plants.



[Cenizo](#)



[White Mistflower](#)



[Rosemary](#)

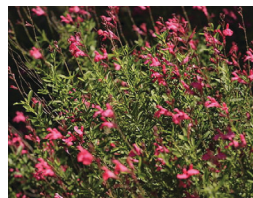


Small Perennial

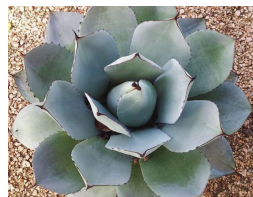
Pick 1 species and buy 5 plants.



[Red Yucca](#)



[Autumn Sage](#)



[Artichoke Agave](#)



Low Growing

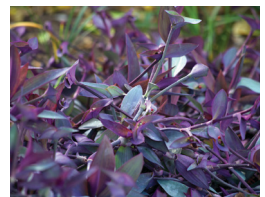
Pick 1 species and buy 6 plants.



[Frogfruit](#)



[Damianita](#)



[Purple Heart](#)

Want \$100 for these plants?

This design is eligible for one WaterSaver Landscape Coupon if you remove 200 square feet of grass. Apply today at GardenStyleSA.com/coupons to get 15 plants for free.

Quick Tips on Planting and Maintenance

Mulch 2 inches deep using 16 bags of 2-cubic-foot wood mulch.



Mountain Laurel

- Pruning is optional.
- Prune dead/diseased wood only.
- No extra watering required.



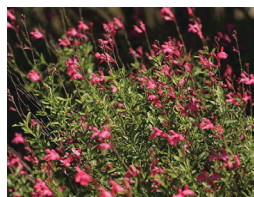
Red Yucca

- Cut down faded flowers in late winter if desired.
- No extra water needed.



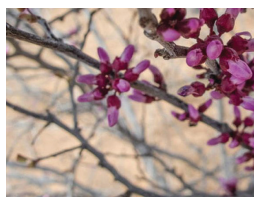
Mexican Buckeye

- Pruning is optional.
- Prune dead/diseased wood only.
- No extra watering required.



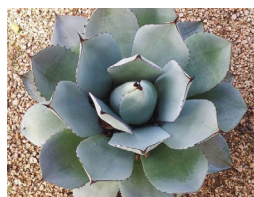
Autumn Sage

- Cut back old branches by 1/3 in spring or as needed.
- Appreciates occasional water.



Redbud

- Pruning is optional.
- Prune dead/diseased wood only.
- No extra watering required.



Artichoke Agave

- Thorny tips can be snipped to minimize pokiness.
- No extra water needed.



Cenizo

- Avoid shearing or becomes sparse.
- Avoid overwatering to prevent root rot.



Frogfruit

- Can be mowed as desired.
- May brown in drought/frost.
- Appreciates occasional water.



White Mistflower

- Prune as needed in early spring.
- Appreciates occasional water.



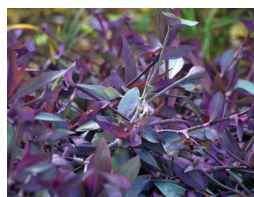
Damianita

- Light shaping as desired.
- No extra water needed.



Rosemary

- Prune to shape if desired.
- Appreciates occasional water.



Purple Heart

- Spreads easily.
- Browns back in winter.
- Appreciates occasional water.



Look for this icon for exceptional performance during exceptional drought!

Watering Countdown To Establish New Plants

3 times per week for 3 weeks.
2 times per week for 2 weeks.
1 time per week for 1 week.
No extra watering required.

Scan for gardening basics and how-to videos on planting, weeding and more!

