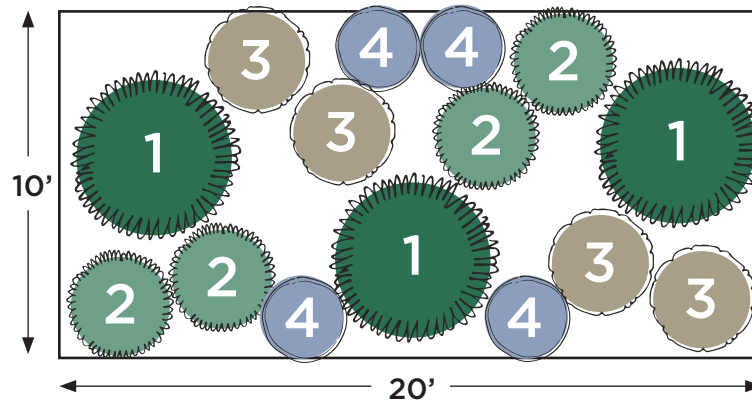


# Plant by Numbers



## Curb Appeal for Sun

Plant selections stay under 3 feet tall. Spacing shown is for fully grown plants.  
Click on plant names for more info on the species.



### Large Perennial

Pick 1 species and buy 3 plants.



[Rosemary](#)



[Muhly Grass](#)



[Red Yucca](#)



### Small Perennial

Buy 4 plants of this species.



[Autumn Sage](#)



### Small Perennial

Pick 1 species and buy 4 plants.



[Octopus Agave](#)



[Artichoke Agave](#)



### Low Growing

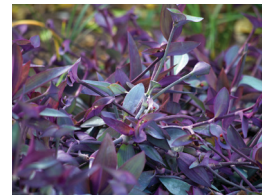
Pick 1 species and buy 4 plants.



[Frogfruit](#)



[Damianita](#)



[Purple Heart](#)

## Want \$100 for these plants?

This design is eligible for one WaterSaver Landscape Coupon if you remove 200 square feet of grass.  
Apply today at [GardenStyleSA.com/coupons](https://GardenStyleSA.com/coupons) to get 15 plants for free.

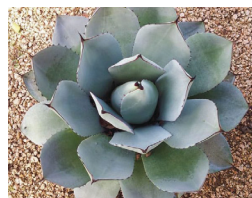
# Quick Tips on Planting and Maintenance

Mulch 2 inches deep using 16 bags of 2-cubic-foot mulch.



## Rosemary

- Prune to shape if desired.
- Appreciates occasional water.



## Artichoke Agave

- Thorny tips can be snipped to minimize pokiness.
- No extra water needed.



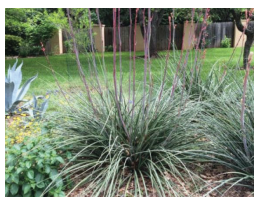
## Muhly Grass

- Cut back in late winter if desired.
- No extra water needed.



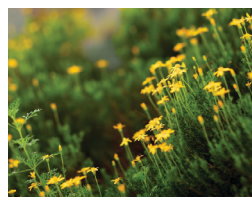
## Frogfruit

- Can be mowed as desired.
- May brown in drought/frost.
- Appreciates occasional water.



## Red Yucca

- Cut down faded flowers in late winter if desired.
- No extra water needed.



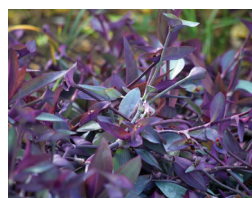
## Damianita

- Light shaping as desired.
- No extra water needed.



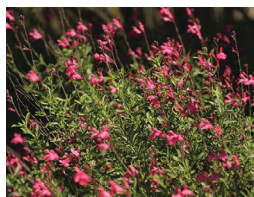
## Octopus Agave

- Cut down faded flowers.
- Transplant pups, if desired.
- No extra water needed.



## Purple Heart

- Spreads easily.
- Browns back in winter.
- Appreciates occasional water.



## Autumn Sage

- Cut back old branches by 1/3 in spring or as needed.
- Appreciates occasional water.

Scan for gardening basics and how-to videos on planting, weeding and more!



## Watering Countdown To Establish New Plants



Look for this icon for exceptional performance during exceptional drought!

**3**  
3 times per week for 3 weeks

**2**  
2 times per week for 2 weeks

**1**  
1 time per week for 1 week

No extra watering required.