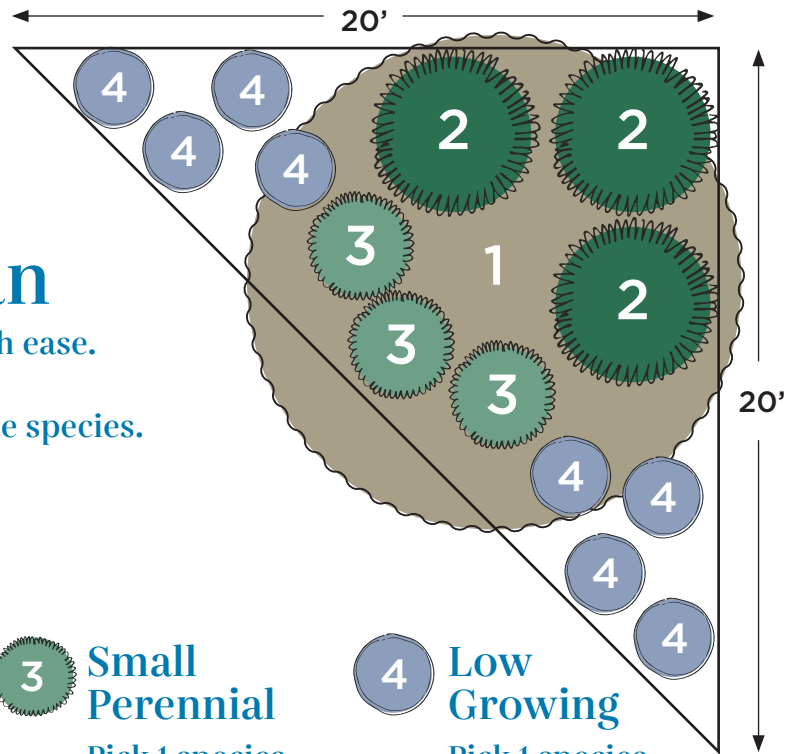


# Plant by Numbers



## Corner Bed for Sun

Plant selections fill out tricky spaces with ease.  
Spacing shown is for fully grown plants.  
Click on plant names for more info on the species.



### Small Tree

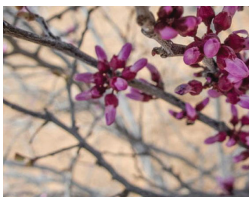
Pick 1 species  
and buy 1 plant.



[Mountain Laurel](#)



[Mexican Buckeye](#)



[Redbud](#)



### Large Perennial

Pick 1 species  
and buy 3 plants.



[Cenizo](#)



[White Mistflower](#)



[Rosemary](#)



### Small Perennial

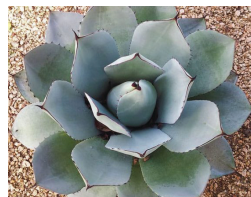
Pick 1 species  
and buy 3 plants.



[Red Yucca](#)



[Autumn Sage](#)



[Artichoke Agave](#)



### Low Growing

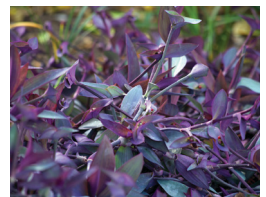
Pick 1 species  
and buy 8 plants.



[Frogfruit](#)



[Damianita](#)



[Purple Heart](#)

## Want \$100 for these plants?

This design is eligible for one WaterSaver Landscape Coupon if you remove 200 square feet of grass.  
Apply today at [GardenStyleSA.com/coupons](https://www.gardensstyle.com/coupons) to get 15 plants for free.

# Quick Tips on Planting and Maintenance

Mulch 2 inches deep using 16 bags of 2-cubic-foot wood mulch.



## Mountain Laurel

- Pruning is optional.
- Prune dead/diseased wood only.
- No extra watering required.



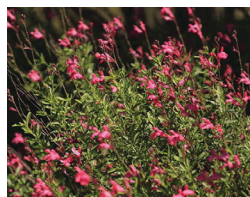
## Red Yucca

- Cut down faded flowers in late winter if desired.
- No extra water needed.



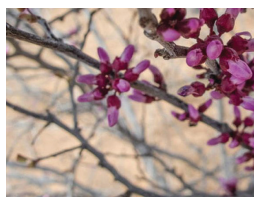
## Mexican Buckeye

- Pruning is optional.
- Prune dead/diseased wood only.
- No extra watering required.



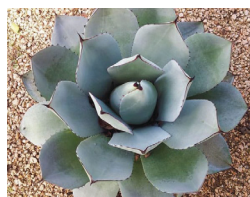
## Autumn Sage

- Cut back old branches by 1/3 in spring or as needed.
- Appreciates occasional water.



## Redbud

- Pruning is optional.
- Prune dead/diseased wood only.
- No extra watering required.



## Artichoke Agave

- Thorny tips can be snipped to minimize pokiness.
- No extra water needed.



## Cenizo

- Avoid shearing or becomes sparse.
- Avoid overwatering to prevent root rot.



## Frogfruit

- Can be mowed as desired.
- May brown in drought/frost.
- Appreciates occasional water.



## White Mistflower

- Prune as needed in early spring.
- Appreciates occasional water.



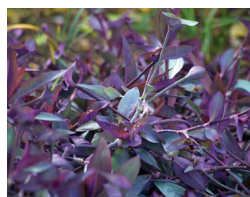
## Damianita

- Light shaping as desired.
- No extra water needed.



## Rosemary

- Prune to shape if desired.
- Appreciates occasional water.



## Purple Heart

- Spreads easily.
- Browns back in winter.
- Appreciates occasional water.



Look for this icon for exceptional performance during exceptional drought!

### Watering Countdown To Establish New Plants

3 times per week for 3 weeks.  
2 times per week for 2 weeks.  
1 time per week for 1 week.  
No extra watering required.

Scan for gardening basics and how-to videos on planting, weeding and more!

