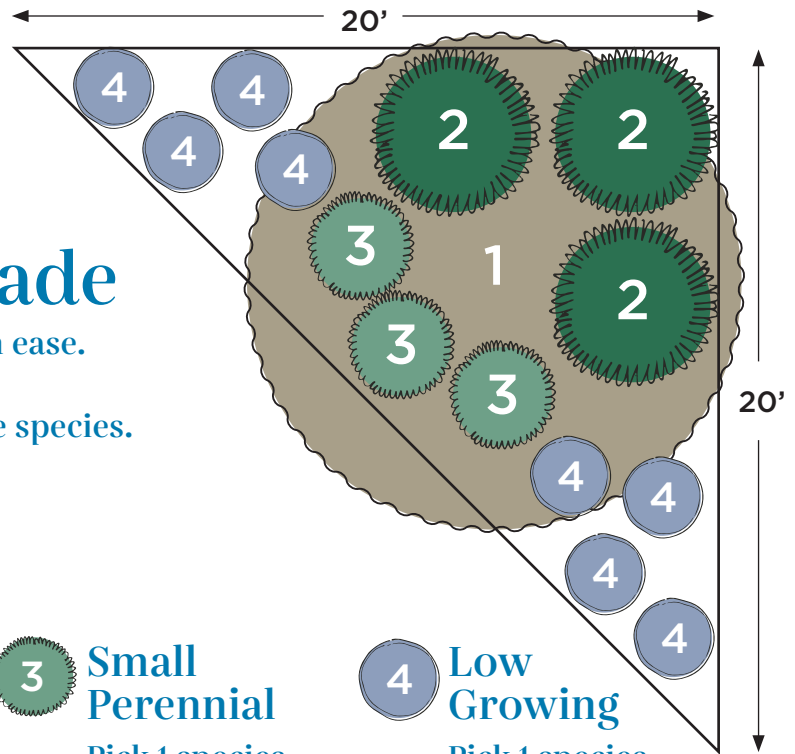


Plant by Numbers



Corner Bed for Shade

Plant selections fill out tricky spaces with ease.
Spacing shown is for fully grown plants.
Click on plant names for more info on the species.



Small Tree

Pick 1 species
and buy 1 plant.



Mexican Buckeye



Yaupon Holly



Possumhaw Holly



Large Perennial

Pick 1 species
and buy 3 plants.



Turk's Cap



Shrimp Plant



Plumbago



Small Perennial

Pick 1 species
and buy 3 plants.



Inland Sea Oats



Flame Acanthus



Dwarf Yaupon

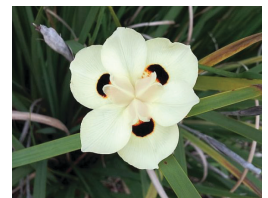


Low Growing

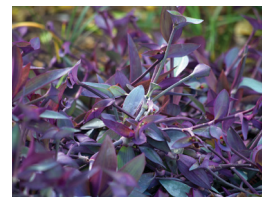
Pick 1 species
and buy 8 plants.



Cedar Sage



Bicolor Iris



Purple Heart

Want \$100 for these plants?

This design is eligible for one WaterSaver Landscape Coupon if you remove 200 square feet of grass.
Apply today at GardenStyleSA.com/coupons to get 15 plants for free.

Quick Tips on Planting and Maintenance

Mulch 2 inches deep using 16 bags of 2-cubic-foot wood mulch.



Mexican Buckeye

- Pruning is optional.
- Prune dead/diseased wood only.
- No extra watering required.



Inland Sea Oats

- Cut back in late winter if desired.
- No extra watering required.



Yaupon Holly

- Pruning is optional.
- Prune to shape only.
- No extra watering required.



Flame Acanthus

- Spreads easily.
- Cut back as needed.
- No extra watering required.



Possumhaw Holly

- Pruning is optional.
- Prune dead/diseased wood only.
- No extra watering required.



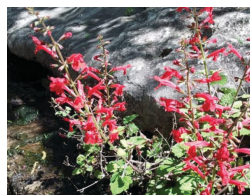
Dwarf Yaupon

- Pruning is optional.
- Lightly prune to shape only.
- No extra watering required.



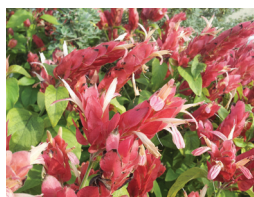
Turk's Cap

- Lightly prune as needed.
- Drops leaves in winter.
- No extra watering required.



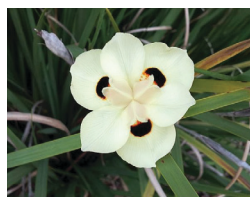
Cedar Sage

- May brown in drought/frost.
- Delicate, no shaping needed.
- No extra watering required.



Shrimp Plant

- Spreads easily.
- Cut back if desired in late winter.
- No extra watering required.



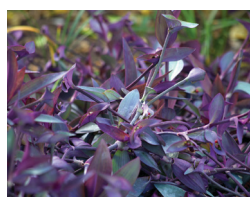
Bicolor Iris

- Cut back in late winter if desired.
- No extra watering required.



Plumbago

- Prune to shape if desired.
- Appreciates occasional water.



Purple Heart

- Spreads easily.
- Cut back as needed.
- Browns back in winter.



Look for this icon for exceptional performance during exceptional drought!

Watering Countdown To Establish New Plants

3 times per week for 3 weeks.
2 times per week for 2 weeks.
1 time per week for 1 week.
No extra watering required.

Scan for gardening basics and how-to videos on planting, weeding and more!

